

The background features a stylized illustration of green leaves at the top and three orange carrots at the bottom. The text is overlaid on this background.

**SEATTLE
NEIGHBORHOOD
FARMERS
MARKETS**

**2024
SPONSORSHIP
OPPORTUNITIES**

OUR MARKETS

YEAR ROUND

UNIVERSITY DISTRICT FARMERS MARKET

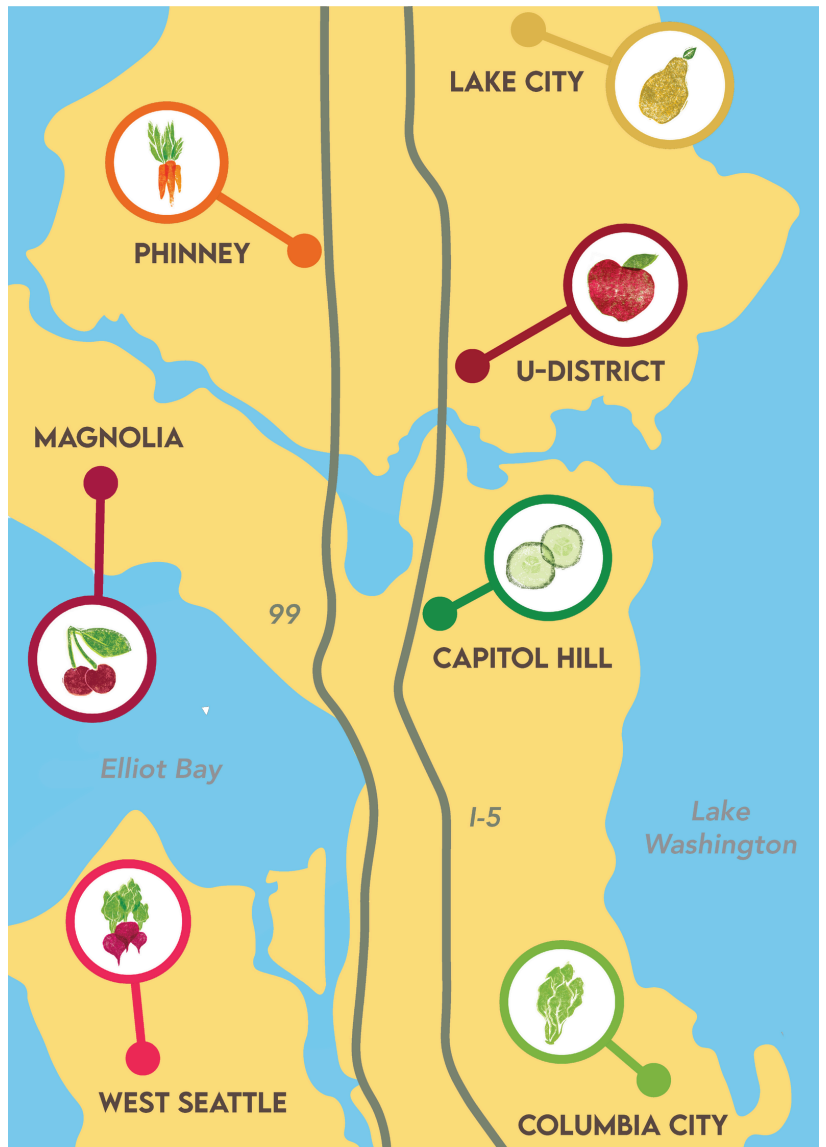
SATURDAY
9 AM - 2 PM

CAPITOL HILL FARMERS MARKET

SUNDAY
11 AM - 2 PM

WEST SEATTLE FARMERS MARKET

SUNDAY
10 AM - 2 PM



CAPITOL HILL TUESDAY FARMERS MARKET

TUESDAY 3 PM - 7 PM
JUNE 4 - SEPT 24

COLUMBIA CITY FARMERS MARKET

WED 3 PM - 7 PM
MAY 1 to OCT 9

LAKE CITY FARMERS MARKET

THURSDAY 3 PM - 7 PM
JUNE 13 TO OCT 3

PHINNEY FARMERS MARKET

FRIDAY 3 PM - 7 PM
JUNE 7 TO SEPT 27

MAGNOLIA FARMERS MARKET

SATURDAY 10 AM - 2 PM
JUNE 1 TO OCT 12

SEASONAL

OUR REACH

WEBSITE

Visitors	20,000
Page views	20%

SOCIAL

facebook	20,000
Instagram	20,000
Twitter	20,000
Impressions	20,000

EMAIL

Subscribers	20,000
Open rate	25-33%

COLLATERAL

Poster distribution	6,000
Postcards	20%
Poster distribution	20,000
Postcards	20%

IN-PERSON VISIBILITY

Connect with dedicated weekly shoppers who value direct relationships, environmental sustainability, and their local community.

Our markets welcome more than:

1,300 - 2,500

WEEKLY VISITORS TO
SEASONAL MARKETS

2,000 - 3,500+

WEEKLY VISITORS TO
YEAR-ROUND
MARKETS (SUMMER)

600,000

VISITORS EACH YEAR



MARKET SPONSORSHIP OPPORTUNITIES

PRESENTING SPONSOR: SEASONAL MARKET - \$5000

Root into one of 5 neighborhoods with the greatest level of exposure.

5 available: Capitol Hill (Tue), Columbia City, Lake City, Phinney & Magnolia

FOOD ACCESS SUPPORTER - \$3000 TO \$4000

Join us at the hub for market information, staff, and our food access programming. This is an opportunity to enhance benefits for low-income neighbors and support local all the way

6 available

SPECIAL EVENT SPONSOR - \$1500 TO \$3500

You bring your crew and we'll bring the fun! Your support will help us present community events from the Zucchini Races to chef demonstrations.

18 available

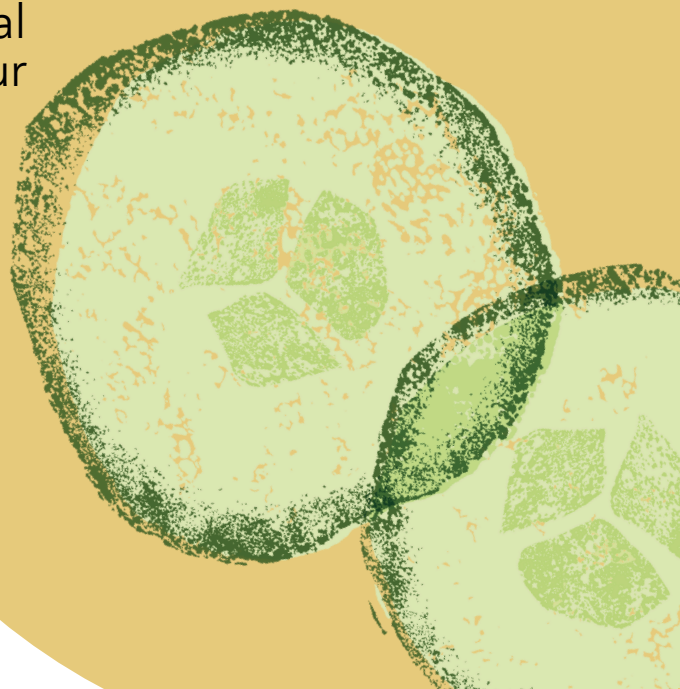
NEIGHBORHOOD CHAMPION - \$1500 TO \$2500

Share your brand with a hyper-local community in a neighborhood of your choice.

10+ available

COMMUNITY CULTIVATOR - \$750

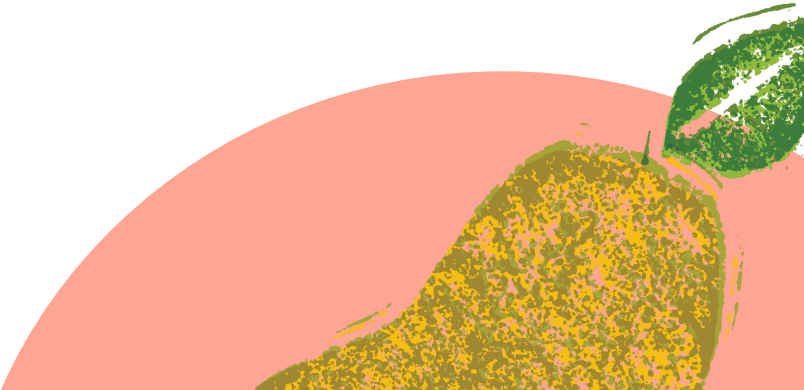
Extend meaningful support to the Neighborhood Farmers Markets!



MARKET SPONSORSHIP BENEFITS

PRESENTING
FOOD ACCESS
SPECIAL EVENT
CHAMPION
CULTIVATOR

Exclusivity	✓	✓	✓		
Activation Booth Day In-Market	2	1	1		
Logo on Market Signage	✓	✓	✓		
Link + Logo on Market Webpage	✓	✓	✓	✓	✓
Social media mention	3	2	2	2	1
Recognition in Annual Report	✓	✓	✓	✓	✓



ACTIVATION GUIDELINES

SHARE IN OUR VALUES!

The Neighborhood Farmers Markets and our shoppers value personal connection, environmental sustainability, and accessibility. As a sponsor, we hope you share these values too, and plan for activations that are:

- Free of waste and excess swag
- Inclusive and accessible to everyone
- Create value for market shoppers
- Are safe and fun!

We are happy to discuss your concept for activation and provide feedback on how best to connect with shoppers during your time in the market!

CONTACT US TO GET INVOLVED TODAY!

Katherine Boury
Director of Development & Communications
kboury@seattlefarmersmarkets.org

Jennifer Antos
Executive Director
jennifer@seattlefarmersmarkets.org